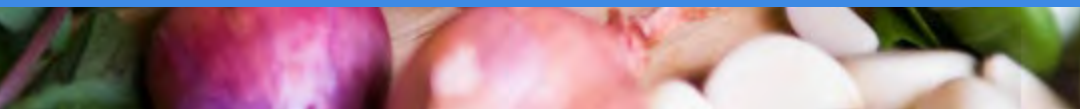




2020 ANNUAL REPORT

# ANSWERING

*The Call to Serve*



# HOW CAN OUR *Voice and Actions* SERVE AS CATALYST FOR A BETTER TOMORROW?

The best answer to that question is **TOGETHER**.

As the roar of a worldwide pandemic rose and two hurricanes tore through our community, a choir of voices and marching feet met this unprecedented challenge head-on. We are truly better together, a sentiment once again proven in the face of great adversity.

We often use tools such as Map the Meal Gap to help quantify the need; yet 2020 rendered these tools useless to measure the unpredictable impact of extraordinary disasters and pandemics. The 2020 reality was lines of individuals and families stretched multiple times around football stadiums waiting for their box of food. So many of those seeking food assistance had never before needed help putting food on their table.

In 2020, Feeding the Gulf Coast expanded its services in every area to meet the increased need through child nutrition programs, agency support, mobile pantries, federal assistance programs, benefits outreach, food sourcing, and more. In addition to those investments, we also began construction on an expansion at our Florida facility and purchased more trucks and equipment, better positioning us to reach the growing need. The team never stood down even during the most challenging times, and our amazing partners stood shoulder to shoulder with us all along the way.

Forty years ago, a group of motivated and inspired people saw the need for a food bank, and they used their voices and actions to make it a reality. Today the seeds they planted have grown into a strong organization capable of inspiring and leading efforts to reach those facing hunger. But, of course, none of this is possible without the ongoing support of our partners, volunteers and donors. We thank you for working with us towards a **better tomorrow**.

**MICHAEL LEDGER**  
President & CEO

**BRAD HICKS**  
2020 Board of Directors Chair

## Food Distribution

Here is a look at how we distributed food through our network of partners last year.

Partner  
Agencies

71%

Mobile  
Distributions

20%

Child  
Nutrition

5%

YOU HELPED PROVIDE OVER  
**33 MILLION  
MEALS**  
FOR PEOPLE FACING HUNGER  
**IN 2020**

4%

Disaster  
Relief

more than  
**38,502,300**  
POUNDS



## The Call to Serve

# 40 Years of Hope

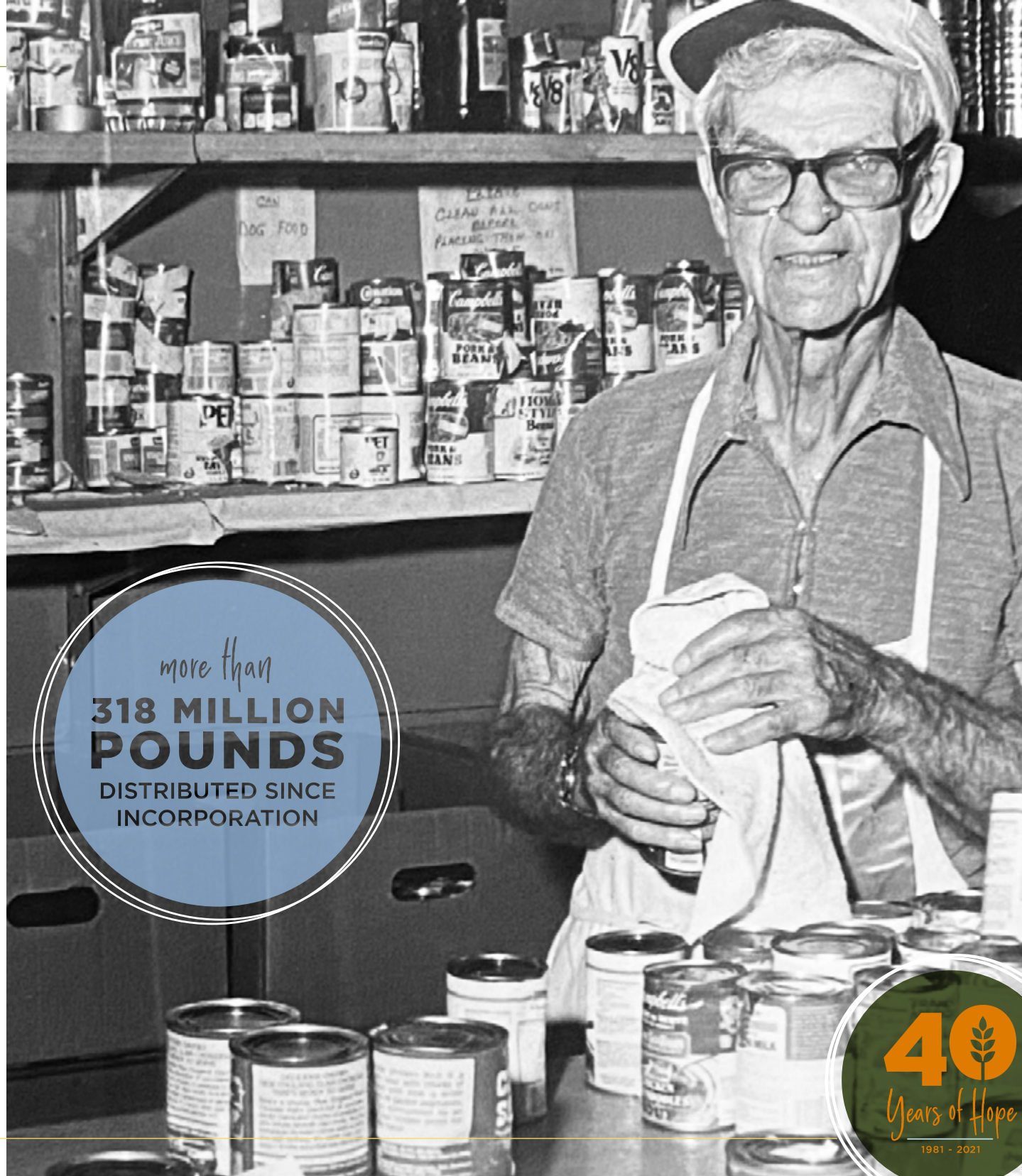
On September 17, 1980, Feeding the Gulf Coast, then known as Bay Area Food Bank, received the green light to open its doors. The food bank was birthed out of a need to invest in those underserved within the Mobile and Eastern Shore communities.

Visionaries saw the lack of resources for those struggling to put food on the table every day. With a \$5,000 donation from All Saints Episcopal Church, the food bank began operations at a facility in downtown Mobile, Alabama. Over the years, warehouse locations have changed and more have been built, the service area has grown, and hunger-relief programs have been implemented.

Forty years later, Feeding the Gulf Coast continues to serve the more than 376,700\* individuals who face hunger along the central Gulf Coast. The spirit of those who established our mission carries through to the staff and network of partners today.

**With four decades of vision and hard work, the organization has become a leading community voice on the importance of addressing food insecurity. It is through the strength of partners and supporters that the organization has continued to work toward a hunger-free central Gulf Coast to bring hope to hundreds of thousands of families.**

\*Map the Meal Gap projected Food Insecurity data, March 2021



more than  
**318 MILLION  
POUNDS**  
DISTRIBUTED SINCE  
INCORPORATION

**40**  
Years of Hope

1981 - 2021

## The Call to Serve

# A Year Like No Other

When schools and businesses began to close early in 2020, the food bank quickly assessed a critical situation: how to proceed safely and effectively to ensure people along the central Gulf Coast had access to their most basic necessity—food.

COVID-19 presented the perfect storm of increased demand, declined food donations, reduced volunteer support, and a disrupted charitable food assistance operating model, creating an economic crisis unlike anything since the Great Depression. The need drastically increased with 1 in 5 of our neighbors here along the Gulf Coast, including 1 in 3 children, facing hunger in 2020.

Many of our neighbors hit hardest by the crisis are working to get back on their feet but are struggling to afford rent, utilities, and food. The impact of hunger can be long-lasting as sacrificial decisions lead to educational development delays and chronic medical consequences.

**Reaching a milestone, Feeding the Gulf Coast distributed more than 33 MILLION MEALS in 2020.**

**This includes more than 38 million pounds of food distributed through more than 800 mobile pantries, more than 400 partner agencies and child nutrition site partners.**

39%

More Meals  
Distributed

DURING THE  
PANDEMIC

Snap  
Applications

6,929

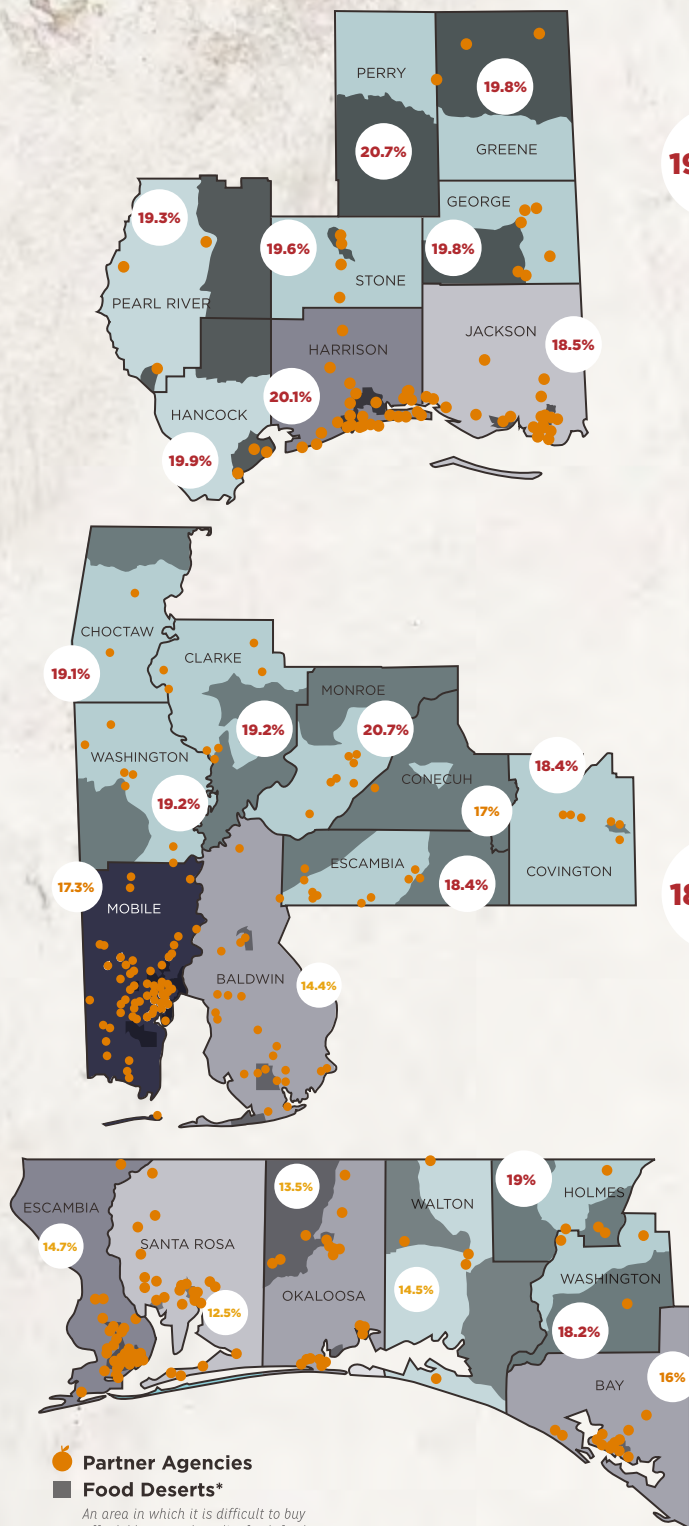
Mobile Food  
Distributions

800+

200+

Advocacy  
Actions





Mississippi  
**100,920**  
 FOOD INSECURE  
 INDIVIDUALS

Alabama  
**132,970**  
 FOOD INSECURE  
 INDIVIDUALS

Florida  
**142,850**  
 FOOD INSECURE  
 INDIVIDUALS

15.49%

## A Closer Look At Hunger

# Map the Meal Gap

Hunger is prevalent throughout the communities we serve, and yet it is often hidden from view. To better address hunger, we must know where it resides.

For over a decade, Feeding America has conducted its annual Map the Meal Gap study\* to illustrate the impact of food insecurity and food costs at the local level. In 2019, the overall food insecurity rate was the lowest in more than twenty years. In the height of the pandemic, Feeding America made calculated adjustments to its map to reflect the impact of the pandemic on food insecurity. They updated their projections (*shown on this map*) again in March 2021.

When this study was released, an estimated 350,370 individuals in our service area experienced food insecurity. Unfortunately, due to the pandemic, that projection has grown to encompass 26,370 more individuals and children who may now struggle with hunger on a consistent basis.

**During April 2020, the food bank saw an extreme increase in web traffic to our “Find a Pantry” web page of individuals looking for agency sites as a result of the increase in need in the community. (+1,301.15%)**

Legend:

2,000 72,000

# of individuals per county who are food-insecure

\*[https://www.feedingamerica.org/sites/default/files/2021-03/National%20Projections%20Brief\\_3.9.2021\\_0.pdf](https://www.feedingamerica.org/sites/default/files/2021-03/National%20Projections%20Brief_3.9.2021_0.pdf)

## Disaster Response

## Sally &amp; Zeta

The 2020 hurricane season left our Gulf Coast communities picking up the pieces of their homes and lives as both Hurricanes Sally and Zeta created additional turmoil during an already hectic year.

Stan and Janice Moss have dedicated years of their lives to supporting families in south Baldwin County through the Christian Service Center, one of our partner agencies in Gulf Shores. They were able to quickly start serving individuals displaced after Hurricane Sally, many of whom lost their jobs due to COVID-19. Janice shared, “We had a beautiful opportunity to serve a group of people in a local campground. Several families lost their homes to the hurricane. We gave a week’s worth of food for all. Some people come in overwhelmed with loss. But people are also overcome with gratitude and joy for the help given to them.” Stan finished with, “Feeding the Gulf Coast is there for us so we can be there for them.”

**Feeding the Gulf Coast distributed 3,153,379 pounds in response to both storms.**

\*Disaster SNAP Benefits

## Through Threat of Sickness and Storms



For our mission to be fully activated in the communities we serve, the food bank relies on the hands and feet of our partner agencies, many of whom are volunteers and older adults who are members of a vulnerable population. In 2020, our partners remained vitally committed through the constant threat of sickness—and, later, hurricanes—to serve those in need. When lines were long and resources stretched thin, our partners worked tirelessly.

“My [late] husband was the breadwinner, and he passed away last July. He had a heart attack. He wasn’t even 50. It has been rough working through the grief, and I am not making enough money to pay bills and buy food.

That is why I have been waiting in line for food from Feeding the Gulf Coast. I have three kids; they are seven, nine, and thirteen. I am from Oregon and don’t have

family here or much support. I overcame addiction. It has been a rough year from [coping with] the death of my husband, the Coronavirus, and trying to keep my family together, but I have stayed clean.” –Trina\*\*

For individuals like Trina, who were already struggling with difficult circumstances, the strain of the pandemic added layers of stress to their daily struggles.

For others, food insecurity was a new experience. When a client encounters hunger and the need for food assistance for the first time, it can be an uncertain and frightening time, but through the partnership and strength of our network, we can provide the hope they need to overcome temporary situations and move from crisis to stability.

**Of the more than 33 million meals we distributed in 2020, more than 17,865,200 meals were provided to families and individuals in need through our partner agencies.**

\*\*Name changed to protect anonymity.

911

D-Snap\*  
Applications



## Through All Means Possible



As schools shifted to various learning environments during the pandemic, the food bank began operating multiple programs—the Afterschool Meals Program, the School Pantry Program, the Backpack Program, and the Summer Meals Program—in tandem to ensure that children's needs were met regardless if they were at home or at school.

"I have an eight-year-old student who is homeless. She has a four-year-old sister, and they are with both biological parents. They have stayed many nights in their car.

The food that [Feeding the Gulf Coast] provides to the students through the school has helped this family have meals to eat."

— Elementary School Social Worker

Feeding the Gulf Coast works hard to find inclusive and efficient ways to connect kids to a consistent source of healthy meals.

As states declared abrupt emergency school closures in 2020, the food bank quickly shifted operations to ensure children who relied on free-and-reduced price meals at school would not go without. Our Child Nutrition team worked

on overdrive to get meals ready to serve through our partnership with parks and recreation sites, schools, and local community centers.

Across our service area, nearly 180 sites partnered to serve meals and snacks to children. Additionally, the food bank worked with more than 130 local schools to distribute meals and supplies through backpacks and school pantries.

**In 2020, Feeding the Gulf Coast was able to provide more than 1,511,000 meals and snacks for more than 17,000 children through our four child nutrition programs.**



17,000+

children  
ensured  
access to  
meals





Purchased  
Product

12%

Federal  
Sources

48%

29%

Retail  
Stores

more than  
39,171,000  
POUNDS

11%

Other  
Donations

## Food Sources

Here is a look at how we acquired food product during 2020.

## Strategies for Food Rescue

### Filling Plates

Helping the people we serve gain access to healthy foods is critical. Ensuring food waste is minimized in the process is an essential part of our mission as well. Connecting with local farmers results in less produce left in the field, and more nourishing food on the plates of those in need.

**By working with more than 180 store donors, we were able to source over 11.5 million pounds of food through local grocers, 84% of which was fresh product.**

#### TOP RETAIL AND FARM DONORS, 10,000 LBS +

BIG LOTS	MASTRONARDI PRODUCE LTD.
BJ'S WHOLESALE CLUB	MIKE ROWELL
C.W. HENDRIX FARMS, INC	MILITARY COMMISSARIES
CAL-MAINE FOODS, INC.	MONDELEZ INTERNATIONAL
CHIUQUITA	OLE HOUSE FARMS
COCA COLA BOTTLING CO	PEANUT PROUD
COLLABORATIVE FOR FRESH PRODUCE	PENRY FARMS
COSTCO	RWE FARMS
FEEDING FLORIDA	PUBLIX
FLOWER'S BAKERY	SAM'S CLUB
FRESH MARKET	SAVE-A-LOT
FRESHPOINT	SESSIONS FARM
GENERATIONS FARMS	TARGET
GENUINE FOODS	THE CHURCH OF JESUS CHRIST OF LATTER DAY SAINTS
HEBERT'S BOUDIN & CRACKLINS	THOMAS PRODUCE COMPANY
HONEY BAKED HAM CO	TOWNSEND BROS
JGL PRODUCE CO.	TYSON FOODS, INC.
KELLOGG'S	VITAL FARMS/EGG CENTRAL STATION
L & M WAREHOUSE AND PACKING	WALMART
LDS - TAYLORVIEW FARM	WALMART DISTRIBUTION CENTER
LONG AND SCOTT FARMS	WINN-DIXIE (SOUTHEASTERN GROCERS)
LOWER MIDWEST REGIONAL COOPERATIVE	WHOLE FOODS
MARJON	





## Volunteerism

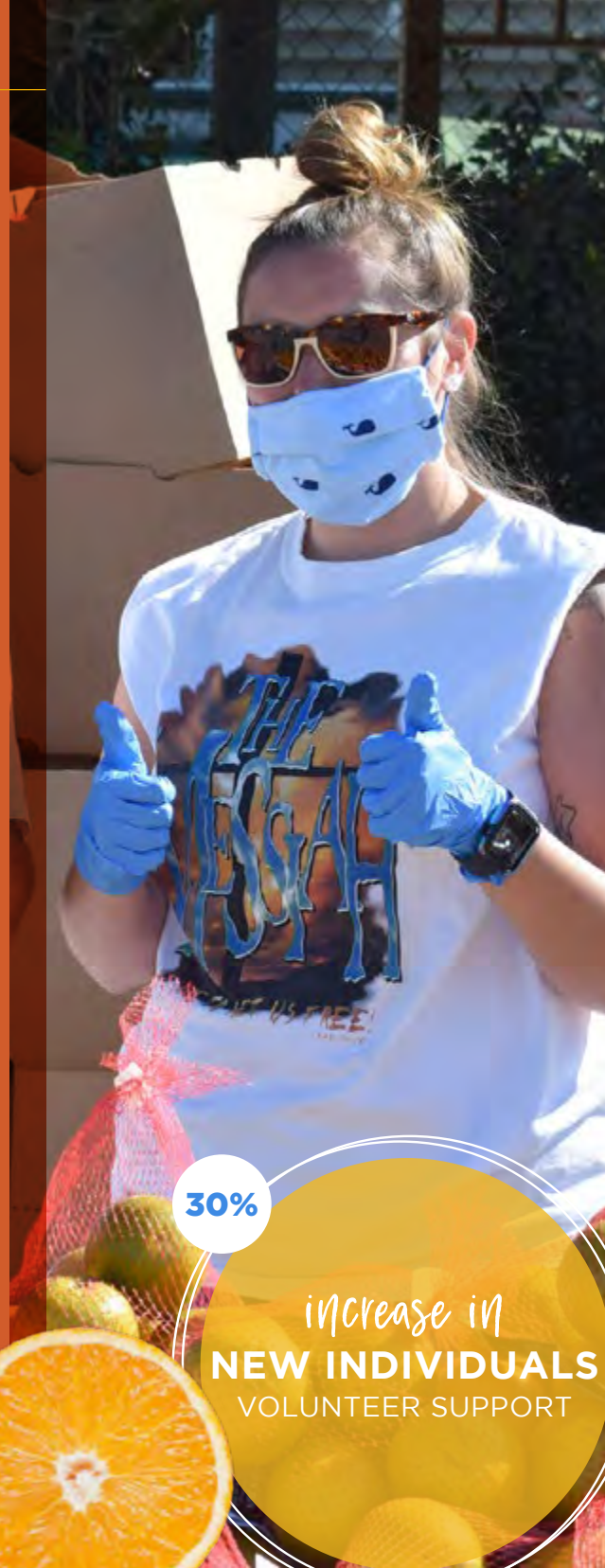
# All Together

As the pandemic progressed in the early Spring of 2020, the food bank experienced a sharp decline in volunteer support as more companies suspended employee outings due to safety concerns.

However, in return, the food bank saw an increase in individuals who utilized their newfound time for community support.

Our volunteer support from new individuals in 2020 increased by 30%. Feeding the Gulf Coast created new avenues for how volunteers could get involved despite reduced group size and warehouse shifts which were limited due to social distancing. In addition, with the increase in mobile food distributions, larger groups were able to volunteer safely in an outdoor environment.

**Almost 24,000 individuals and groups helped provide an estimated \$2,245,530 of paid staff and operation time by donating over 224,550 hours of their time.**



30%

increase in  
**NEW INDIVIDUALS**  
VOLUNTEER SUPPORT



## Volunteers, 40+ Hours of Service

### 999-500

ALTAPOINTE HEALTH  
DAVIDSON HIGH SCHOOL  
MATTHEW GAINUS  
SARAH HORN

### 499-100

100 BLACK MEN  
ASHBURY AME ZION  
AUSTIN JORDAN  
BRYANT HIGH SCHOOL  
CHERI BENGLEN  
CITRONELLE HIGH SCHOOL-Future Business Leaders of America  
CORPUS CHRISTI  
COTTAGE HILL CHRISTIAN ACADEMY  
GAUTIER FIRST UNITED METHODIST CHURCH  
JAELYN JOHNSON  
MARIANA RODRIGUEZ  
OMEGA LAMPLIGHTERS MOBILE CHAPTER  
PAM BIGGS  
RYAN GREEN  
SENIOR BOWL  
ST. PAUL'S EPISCOPAL SCHOOL  
THE CHURCH OF JESUS CHRIST OF LATTER-DAY SAINTS  
THEODORE HIGH SCHOOL  
UNITED STATES COAST GUARD

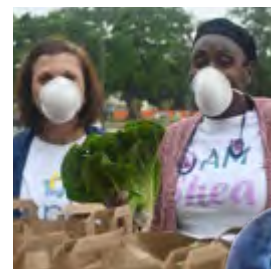
WINN-DIXIE (SOUTHEASTERN GROCERS)  
ZION GILLARI

### 99-40

ARC OF THE EMERALD COAST  
AT&T  
BETTY WOLTERS  
BOYS & GIRLS CLUB-Cody Road  
CENTERSTATE BANK  
CHARLES AND SHIRLEY WALKER  
CHURCH OF THE HARVEST  
ELAJAH THICKLIN  
GEORGIA LEE HOFFER  
HARVEST CHURCH  
HILLCREST BAPTIST CHURCH  
JIMMY FERNEAU  
JOHN LACY  
JUDI ANKIEWICZ  
KAPPA DELTA CHI  
KEESLER AIR FORCE BASE  
L.E.A.D ACADEMY CLASSICAL SCHOOL  
LARRY KENDRICK  
LILLIE HEDBERG  
MCGILL-TOOLEN CATHOLIC HIGH SCHOOL  
NANCY HANNA

NAVAL MOBILE CONSTRUCTION-Battalion Eleven

NEILL DELANEY  
PATRICIA SCHWARTZ  
PUBLIX-Midtown Mobile  
REBECCA SPRINGER  
REESE CONNALLY  
RSVP-Milton  
SAMUEL SPENCER  
SANTA ROSA COUNTY-SKILL Program  
SHERI WEBER  
SIMS MIDDLE SCHOOL  
SOUTHEAST TOYOTA FINANCE  
SPIRE ENERGY  
ST. LUKE'S EPISCOPAL SCHOOL  
STEVIA KEIL  
TAMMY MARTIN  
TEAM RUBICON  
TEMPLE OF JERUSALEM MINISTRIES  
THE HILLER COMPANY  
THE WEST FAMILY  
TRINITAS CHRISTIAN SCHOOL  
TYLA CLARK  
TYNDALL AIR FORCE BASE  
UNIVERSITY OF WEST FLORIDA  
VERIZON WIRELESS  
WELLS FARGO



# Food & Fund Drives, 500+ Meals

## 99,999-25,000

LAMBDA CHI ALPHA  
ROUSES  
SPRING HILL BAPTIST CHURCH  
WINN-DIXIE  
(SOUTHEASTERN GROCERS)

## 24,999-5,000

ALABAMA ATTORNEY  
GENERAL'S OFFICE,  
ALABAMA STATE BAR,  
& ALABAMA FOOD  
BANK ASSOCIATION-  
*Alabama Legal Food Frenzy*  
ALABAMA POWER SERVICE  
ORGANIZATION  
ALPHA KAPPA ALPHA  
ANNIKA BROGAN  
ARSLAN ARSHAD  
BELTONE HEARING CENTERS  
CARMAX  
COBBLESTONE HOMEOWNER'S  
ASSOCIATION  
GOODWILL EASTERSEALS  
HILLER COMPANIES  
INFIRMARY HEALTH  
MERRILL LYNCH  
MOBILE AREA COUNCIL  
BOY SCOUTS OF AMERICA-  
*Scouting for Food*  
MS COAST YOUNG  
PROFESSIONALS-  
*Walking on Water*  
NATIONAL ASSOCIATION  
OF LETTER CARRIERS-  
*Stamp Out Hunger*  
PUBLIX  
SENIOR BOWL  
UNIVERSITY OF SOUTH  
ALABAMA-Soccer Team  
USA HEALTH  
VIRGINIA BENDER  
PHOTOGRAPHY  
WIREGRASS UNITED WAY

## 4,999-1,000

AMERICA'S FIRST FEDERAL  
CREDIT UNION  
ARETE  
BARRY LANGLEY  
BETTER FUTURE FOUNDATION  
BETTER HOMES AND  
GARDENS  
CARRIE BARTON  
CAUSEY MIDDLE SCHOOL  
CHICK-FIL-A  
CHRIST CHURCH CATHEDRAL  
COUNTRY CLUB ESTATES  
DENISON CROCKER  
EBAY VOLUNTEER MATCH  
EICHOLD-MERTZ MAGNET  
SCHOOL OF MATH, SCIENCE  
AND TECHNOLOGY  
EXXON MOBILE  
FABLED BREW  
FEDS FEED FAMILIES  
FOOSACKLY'S  
GAUTIER FIRST UNITED  
METHODIST CHURCH  
GULF COAST COMMISSION  
OFFICERS  
HANNAH MANSFIELD  
IQ EATERY  
IRBY ELECTRIC  
JOHN D. JONES  
KENDRA SCOTT, LLC  
LEWIS COMMUNICATIONS  
LOGAN'S ROADHOUSE  
MAITRE & CRABTREE  
DENTAL GROUP  
MAXIMUS INC.  
MÜV DISPENSARY  
NATCHEZ TRAIL PROPERTY  
OWNERS ASSOCIATION  
PORT CITY FAMILY  
CHIROPRACTIC

SANTA ROSA YOUNG  
PROFESSIONALS  
SMILE CENTER  
SOUTHEAST TOYOTA  
FINANCE  
SPRING HILL MANOR  
ST. IGNATIUS SCHOOL-  
*Student Government Association*  
THE GROUNDS  
THE KNIGHTS OF  
COLUMBUS COUNCIL  
TONSMEIRE PROPERTIES  
TOOMEY'S MARDI GRAS  
TRACTOR SUPPLY COMPANY  
TYNDALL AIR FORCE BASE  
UNITED STATES COAST  
GUARD  
WELLS FARGO

## 999-500

ALABAMA MEDICAL GROUP  
ALPHA GAMMA DELTA  
ALPHA TAU OMEGA  
CSL PLASMA  
DAUPHIN WAY BAPTIST  
CHILD DEVELOPMENT CENTER  
FUN PLEX OF GULF BREEZE  
GRACE PRESBYTERIAN  
CHURCH  
JUDI ANKIEWICZ  
LIFEGUARD AMBULANCE  
SERVICE  
LISA HAGER  
MOBILE DREXEL SOCIETY  
ST ENGINEERING  
THOMAS JEBB  
TONY'S TEJAS SALSA  
WALMART DISTRIBUTION  
CENTER  
WHOLE FOODS MARKET

**In 2020, over 594,540 meals were provided  
through Food and Fund Drives.**

## Community Support

# Creative Ways

When communities work together, amazing things can happen. Food and fund drives play a critical role in helping the food bank to provide a mix of shelf-stable products to our agencies.

Many local businesses, groups, and individuals pulled together in 2020 to help the food bank meet our community's needs. Individuals tapped into their strengths and talents to run marathons, take family photos, and utilize their circles of support to help raise awareness, funds, and food in creative ways.

**"WHEN OUR CHURCH FAMILY  
HEARD THERE WAS AN INCREASED  
NEED FOR FOOD DURING THE PANDEMIC,  
THEY LEAPT INTO ACTION. THERE WERE  
SO MANY THINGS WE COULD NOT DO  
DURING THE PANDEMIC, BUT MAKING SURE  
OUR NEIGHBORS WEREN'T HUNGRY WAS  
SOMETHING WE COULD DO.**

**IT WAS A TREMENDOUS BLESSING FOR  
OUR SPRING HILL BAPTIST FAMILY TO BE  
ABLE TO SERVE OUR COMMUNITY DURING  
A TIME FILLED WITH FEAR, SICKNESS, AND  
SCARCITY. IT'S OUR PRAYER THAT GOD'S  
LOVE AND CARE WAS FELT AS A RESULT."**

— Erica N. Holloway,  
Spring Hill Baptist Church



# Financials

## SUPPORT AND REVENUE

CONTRIBUTIONS & GRANTS	\$68,540,510
HANDLING FEES	\$2,727,465
INVESTMENTS & OTHER INCOME	\$114,071
<b>TOTAL SUPPORT &amp; REVENUE:</b>	<b>\$71,382,046</b>

## EXPENSES

PROGRAM SERVICES	\$53,575,783
MANAGEMENT & GENERAL	\$589,668
FUNDRAISING	\$839,211
<b>TOTAL EXPENSES</b>	<b>\$55,004,662</b>

## ASSETS

CASH, EQUIVALENTS, & INVESTMENTS	\$18,562,519
ACCOUNTS & PLEDGES RECEIVABLE	\$825,982
INVENTORIES	\$2,110,409
PROPERTY, PLAN, & EQUIPMENT, NET	\$5,089,765
OTHER ASSETS	\$102,787
<b>TOTAL ASSETS</b>	<b>\$26,691,462</b>

## LIABILITIES AND ASSETS

CURRENT LIABILITIES	\$614,882
LONG TERM LIABILITIES	\$191,590
NET ASSETS WITHOUT DONOR RESTRICTIONS	\$22,680,256
NET ASSETS WITH DONOR RESTRICTIONS	\$3,204,734
<b>TOTAL LIABILITIES &amp; ASSETS</b>	<b>\$26,691,462</b>

## CHANGE IN NET ASSETS

CHANGE IN NET ASSETS	\$16,377,384
NET ASSETS, BEGINNING OF THE YEAR	\$9,507,606
NET ASSETS, END OF THE YEAR	\$25,884,990



Feeding the Gulf Coast is a four-star rating from Charity Navigator, the largest and most-utilized evaluator of charities in the United States. Charity Navigator awards their four-star rating to nonprofits that exceed industry standards in financial health, accountability and transparency.

**\$0.97 OF EVERY  
\$1 DONATED,  
SUPPORTS  
PROGRAMS**

**97.5%**

Programs

Fundraising

**1.5%**

Management

**1%**

# Organization & Foundation Donors

## \$200,000+

ALABAMA FOOD BANK  
ASSOCIATION  
FEEDING AMERICA  
FEEDING AMERICA, *thanks to*  
JEFF BEZOS  
FEEDING AMERICA, *thanks to*  
WALTON FAMILY FOUNDATION  
VERIZON

## \$199,999-\$50,000

AARP  
BLUE CROSS BLUE SHIELD  
OF MISSISSIPPI FOUNDATION  
EFS NATIONAL BOARD  
PROGRAM  
FEEDING AMERICA, *thanks to*  
CIRCLE K  
FEEDING AMERICA, *thanks to*  
MORGAN STANLEY  
FEEDING AMERICA, *thanks to*  
THE DAVID TEPPER  
CHARITABLE FOUNDATION, INC.  
HANCOCK WHITNEY  
KLARICH FAMILY FUND  
MORGAN STANLEY  
NATIONAL COUNCIL ON AGING  
PUBLIX SUPER MARKETS  
CHARITIES, INC.  
SONNEBORN CHARITABLE  
FOUNDATION *c/o* OAKWORTH  
CAPITAL BANK  
TARGET CORPORATION  
THE CLEMENTS FAMILY  
FOUNDATION  
THE COMMUNITY FOUNDATION  
OF SOUTH ALABAMA  
THE JAMES M. COX  
FOUNDATION  
UNITED WAY OF SOUTHWEST  
ALABAMA  
WIND CREEK CASINO &  
HOTEL ATMORE

## \$49,999-\$10,000

A SIMPLE FAITH CHURCH  
ALLSTATE FOUNDATION  
AMERICAN ENDOWMENT  
FOUNDATION  
AT&T  
AUSTAL USA  
BANK OF AMERICA  
CHARITABLE GIFT FUND  
BETTY L. LANIUS TRUST  
BRIGGS EQUIPMENT  
CITY OF MOBILE  
COSTCO WHOLESALE

CRUZAN RUM  
CUNNINGHAM FAMILY  
CHARITABLE FOUNDATION  
CVS PHARMACY, INC.  
DAVID W. AND MARLENE C.  
OTERI CHARITABLE FUND  
ENTERPRISE HOLDINGS  
FOUNDATION  
EVERWOOD TREATMENT, INC.  
FEEDING AMERICA, *thanks to*  
BBVA FOUNDATION  
FEEDING AMERICA, *thanks to*  
CAMPBELL SOUP CO.  
FEEDING AMERICA, *thanks to*  
CONAGRA BRANDS  
FEEDING AMERICA, *thanks to*  
CVS HEALTH  
FEEDING AMERICA, *thanks to*  
GENERAL MILLS  
FEEDING AMERICA, *thanks to*  
JERSEY MIKE'S  
FEEDING AMERICA, *thanks to*  
OLLIE'S BARGAIN OUTLET  
FEEDING AMERICA, *thanks to*  
PEPSICO  
FEEDING AMERICA, *thanks to*  
SOUTHEASTERN GROCERS  
FEEDING AMERICA, *thanks to*  
SUBARU  
FEEDING AMERICA, *thanks to*  
SUBWAY  
FEEDING AMERICA, *thanks to*  
THE KRAFT HEINZ COMPANY  
FEEDING AMERICA, *thanks to*  
TJX FOUNDATION  
FEEDING AMERICA, *thanks to*  
WELLS FARGO FOUNDATION  
FEEDING AMERICA, *thanks to*  
WALMART & SAM'S CLUB  
FIGHT HUNGER. SPARK  
CHANGE. CAMPAIGN  
FEEDING FLORIDA, INC.  
FIDELITY CHARITABLE  
GIFT FUND  
FINASTRA  
GREEN LEWIS CHARITABLE  
FUND  
GULF POWER COMPANY  
HOLMES COUNTY BOARD  
OF COMMISSIONERS  
HYMAN FOUNDATION  
IBERIABANK  
JEFFEY'S CHOICE, INC.  
JM FAMILY ENTERPRISES, INC.  
MERRILL LYNCH *c/o* S T  
KILLIAN FOUNDATION  
MISSISSIPPI FARM BUREAU  
CASUALTY INSURANCE  
COMPANY *c/o* MISSISSIPPI  
FOOD NETWORK

MOBILE COUNTY COMMISSION  
MORGAN STANLEY GIFT FUND  
NUTRIEN  
PNC BANK  
R4 CAPITAL, LLC  
RAYMOND JONES CHARITABLE  
*c/o* MCKNIGHT FAMILY  
FOUNDATION  
REESE'S SENIOR BOWL *c/o*  
GMR MARKETING, LLC  
REGIONS PRIVATE WEALTH  
MANAGEMENT *c/o* VERNON  
& ALICE WHITE CHARITABLE  
TRUST  
SCHWAB CHARITABLE FUND  
SEASIDE NATIONAL BANK &  
TRUST *c/o* RODNEY HUDSON  
SHARE OUR STRENGTH  
SHOE STATION CHARITABLE  
FUND  
SOUTHEASTERN GROCERS  
SOUTHERN POVERTY LAW  
CENTER  
SPARKLIGHT  
STATE OF ALABAMA  
SUBARU OF AMERICA, INC.  
SYBIL SMITH FOUNDATION  
THE DANIEL FOUNDATION  
OF ALABAMA  
THE JULIEN E. MARX  
FOUNDATION TRUST  
TITO'S HANDMADE  
TRUSTMARK WEALTH  
MANAGEMENT  
TYNDALL FEDERAL CREDIT  
UNION  
UNITED WAY EMERALD COAST  
UNITED WAY OF AMERICA  
UNITED WAY OF BALDWIN  
COUNTY  
UNITED WAY OF NORTHWEST  
FLORIDA  
UNITED WAY OF SOUTH  
MISSISSIPPI  
UNITED WAY OF WEST  
FLORIDA  
USDA FOOD AND NUTRITION  
SERVICES  
VANGUARD CHARITABLE *c/o*  
THE DON & NANCY ROBERTS  
CHARITABLE FUND  
VANGUARD CHARITABLE *c/o*  
THE WALL CHARITABLE FUND  
VANGUARD CHARITABLE  
GIVING PROGRAM  
WALMART STRATEGIC  
INITIATIVES FUND  
WELLS FARGO FOUNDATION

## \$9,999-\$5,000

CUSTOMINK, LLC  
ASCENSION HEALTH MINISTRY  
INDUSTRIAL CORROSION  
CONTROL, INC.  
GLOBALGIVING + FACEBOOK  
CRISIS RESPONSE  
FEEDING AMERICA, *thanks to*  
PRODUCE FOR KIDS  
THE BLACKBAUD GIVING FUND  
BY ITS AGENT, YOURCAUSE  
BARRY CHAPTER OF THE  
ALABAMA POWER SERVICE  
ORGANIZATION  
FEEDING AMERICA, *thanks to*  
THE J.M. SMUCKER CO.  
INTERNATIONAL PAPER  
FOUNDATION  
FEEDING AMERICA, *thanks to*  
BUSH BROTHERS  
COAST ELECTRIC POWER  
ASSOCIATION  
CHOCTAWHATCHEE  
RIVERKEEPER  
SPIRE  
GENERAL MILLS, INC. &  
GENERAL MILLS FOUNDATION  
SPARTANNASH FOUNDATION  
SANTA ROSA COUNTY BOARD  
OF COMMISSIONERS  
LAMBDA CHI ALPHA  
FEEDING AMERICA, *thanks to*  
CLOROX COMPANY  
COLUMBIA SOUTHERN  
UNIVERSITY, INC.  
BALDWIN COUNTY FARMERS  
FEDERATION  
EVANS-COCKERLINE  
FOUNDATION  
BANK OZK  
CN CORPORATE SERVICES  
FMC CORPORATION  
HEALTHCARE & DIAGNOSTIC  
SOLUTIONS  
HUMANA  
LEPPON RENTS/BOBCAT OF  
PANAMA CITY  
SEAR FAMILY FOUNDATION  
E.I. DUPONT DE NEMOURS  
& COMPANY  
MORGAN STANLEY  
MARTIN NURSERY WHOLESAL  
C. D., HELEN & JEFF GLAZE  
FOUNDATION  
RICHARD & MARJORIE QUINA  
CHARITABLE TRUST  
CARL J. BROWN ESTATE  
WEBSTER GIVING FUND  
WOODMENLIFE MOBILE  
CHAPTER 1

## \$4,999-\$1,000

FEEDING AMERICA, *thanks to*  
HOT TOPIC/BOX LUNCH  
MOBILE ENERGY, LLC  
LEIDOS COMPANY  
ARBY'S FOUNDATION, INC.  
FARM CREDIT OF NORTHWEST  
FLORIDA  
FEEDING AMERICA, *thanks to*  
GREAT VALUE  
YOURCAUSE, LLC TRUSTEE  
FOR FMC CORPORATION  
FEEDING AMERICA, *thanks to*  
NESTLE WATERS  
PAYPAL CHARITABLE  
GIVING FUND  
HY-GRADE VALVE, INC.  
WELLCARE HEALTH PLANS,  
INC.  
TATE & LYLE INGREDIENTS  
FEEDING AMERICA, *thanks to*  
WALMART  
SPRING HILL BAPTIST CHURCH  
FEEDING AMERICA, *thanks to*  
COCA-COLA  
BIG LOTS FOUNDATION OF THE  
COLUMBUS FOUNDATION  
FEEDING AMERICA, *thanks to*  
AT&T  
JOHNSON & JOHNSON *c/o*  
CYBERGRANTS  
CHARITIES AID FOUNDATION  
OF AMERICA *c/o*  
CYBERGRANTS  
WHOLE FOODS MARKET  
DELTA THETA OMEGA  
FOUNDATION  
SOUTHERN AGCREDIT, FLCA  
ST. ANDREW'S EPISCOPAL  
CHURCH FOUNDATION  
TENSAR MULCH, LLC  
MOBILE ACCOUNTING  
ASSOCIATES  
WALMART CORPORATE GIVING  
AHS FOUNDATION  
LILLIAN C. MCGOWIN  
FOUNDATION  
TRIDENT PLAZA, INC.  
GEOCENT, LLC  
GENESIS ENERGY  
ALABAMA STATE BAR  
AIRBUS AMERICAS  
ENGINEERING, INC.  
BALDWIN COUNTY BAR  
ASSOCIATION  
SBA COMMUNICATIONS  
CORPORATION  
WS FOUNDATION, INC.  
INEOS PHENOL  
SEMMES BAPTIST CHAPEL  
THE HERSHEY COMPANY

INGALLS SHIPBUILDING, A  
DIVISION OF HUNTINGTON  
INGALLS INDUSTRIES  
FEEDING AMERICA, *thanks to*  
THE PAMPERED CHEF  
FEEDING AMERICA, *thanks to*  
DR. PEPPER  
SENIOR BOWL  
YOURCAUSE, LLC TRUSTEE  
FOR CHEVRON MATCHING  
EMPLOYEE FUNDS  
GLOBALGIVING  
NALC AFL-CIO AZALEA CITY  
BRANCH 469  
ALLIANCE TO THE MEDICAL  
SOCIETY OF MOBILE COUNTY  
DAUGHTERS OF THE  
HOLY SPIRIT  
BUCHBINDER TUNICK & CO LLP  
NAVY FEDERAL CREDIT UNION  
SMITH FAMILY FUND  
KELLER-SMITH SUPPLY, INC.  
AMERIPRISE FINANCIAL  
ANNUAL GIVING CAMPAIGN  
TOLAN CHARITABLE LEAD  
TRUST  
BNY MELLON CHARITABLE  
GIFT FUND  
ADJUSTERS GIVE BACK, INC.  
FEEDING AMERICA, CLOROX  
COMPANY/HIDDEN VALLEY/  
WALMART  
APPRIVER  
HEROES SPORTS BAR & GRILLE  
BUDWEISER-BUSCH  
DISTRIBUTING, INC.  
FEEDING AMERICA, *thanks to*  
CARGILL  
NORTHSTAR CHURCH, INC.  
FEEDING AMERICA, *thanks to*  
KENDRA SCOTT  
FEEDING AMERICA, *thanks to*  
CROCS  
ANGLERS RESOURCE, LLC  
CGI TECHNOLOGIES &  
SOLUTIONS INC.  
COMMUNITY FOUNDATION  
FOR GREATER ATLANTA  
BAY AREA NURSE  
PRACTITIONER ASSOCIATION  
ITW CORPORATE  
DISBURSEMENT  
REGIONS BANK  
CANFOR SOUTHERN PINE  
UNITED WAY OF MONROE  
COUNTY  
FEEDING AMERICA, *thanks to*  
POST CONSUMER BRANDS  
FEEDING AMERICA, *thanks to*  
CLIF BAR & COMPANY  
MOBILE COUNTY  
FISER GIAFAGLEONE  
CHARITABLE FUND



## Organization & Foundation Donors

FEEDING AMERICA, *thanks to* SCIENCE APPLICATIONS INTERNATIONAL CORP.

FEEDING AMERICA, *thanks to* MIGHTY SPARK INFIRMARY HEALTH

FAMILY SECURITY CREDIT UNION

WJHG PANAMA CITY BEACH

BROWN-FORMAN

QUINNELLY, INC.

BANK OF AMERICA CHARITABLE GIVING

WILLIAM E. AND JESSICA M. CHARITABLE FUND

THE GOODCOIN FOUNDATION c/o TARGET

COASTAL HARDWOOD, INC.

FABLED BREW

MAIN STREET PROPERTIES

SOUTHERN CRIMINAL JUSTICE ASSOCIATION

JOE GEIL PLUMBING CO., INC.

DISCOVER CHIROPRACTIC CENTERS, P.C.

ANDERSON LIVING TRUST

AIRCRAFT TECHNOLOGIES GROUP, INC.

BELTONE

BROTHERS KEEPER MINISTRIES

CARDOSO LAW OFFICES

DISTILLERS LEAGUE OF ALABAMA

EGLIN FEDERAL CREDIT UNION

GULF DISTRIBUTING CO. OF MOBILE, LLC

HDR, INC.

M. W. SMITH JR. FOUNDATION

MISSISSIPPI EXPORT RAILROAD COMPANY

NORTH RALEIGH PRESBYTERIAN CHURCH

O. O. MARDI GRAS MASKERS

SAAD DEVELOPMENT CORPORATION

SPENCER LAW

THE MOBILE LIONS CLUB CHARITY FOUNDATION

THE PERRY FAMILY FOUNDATION

THE SOUTHLAND FUND

NATIONAL ASSOCIATION OF LETTER CARRIERS OF THE UNITED STATES OF AMERICA

TRUE VINE BAPTIST MISSION

EMERALD COAST HOSPICE

MCDONALD LAW, LLC

CHARLES SCHWAB

BRYANT BANK

MPC COMMUNITY CONNECTION GENERAL OFFICE CHAPTER

SONS OF ITALY IN AMERICA-BUONA FORTUNA LODGE 2835 KNIGHTS OF COLUMBUS COUNCIL 4888

IP CASINO

STONE CROSBY, PC

THE CARMAX FOUNDATION

SCHWARTZ FAMILY FUND

CITY OF PENSACOLA

BANCORPSOUTH

CHRISTINE LEBERT FUND

VERMYLEN FAMILY FUND

THE CLEO F. & PATRICIA C. METTY FAMILY CHARITABLE FUND

### \$999-\$500

A GIRL & HER GOLDFISH

ALPHA KAPPA ALPHA, SORORITY INC. (DELTA THETA OMEGA CHAPTER)

ANN & A. F. DELCHAMPS JR. CHARITABLE FUND

ARK ANIMAL HOSPITAL

BAILEY GIVING FUND

BASKIN-ROBBINS

BRYANT'S MEAT

CENTRAL PENTECOSTAL MINISTRIES, INC.

CHARITY GIFT CERTIFICATES

CHRIST CHURCH CATHEDRAL

COAST YOUNG PROFESSIONALS

CONGREGATION AHAVAS CHESED

CORNERSTONE FACILITIES ENGINEERING, INC.

DISCOUNT SEPTIC, LLC

EXXONMOBIL FOUNDATION

EYAL LIVING TRUST

FEEDING AMERICA, *thanks to* MONSTER ENERGY

FEEDING AMERICA, *thanks to* NATURE NATE'S

FEEDING AMERICA, *thanks to* WHOLE FOODS MARKET

FRANKLIN PRIMARY HEALTH CENTER

GREG MARLER CHARTER BOATS

HALL'S THEODORE WHOLESALE FLORIST, INC.

HAND & ASSOCIATES

HOLY SPIRIT ANGLICAN CHURCH

HOLY TRINITY GREEK ORTHODOX CHURCH

ICC MARINE, INC

IQ EATERY

JACK & DIANE'S INC.

JACK R. THOMAS LIVING TRUST

KENDRA SCOTT, LLC

KIMLEY-HORN FOUNDATION

LILLIAN UNITED METHODIST MEN

LISA MITCHELL CHARITABLE FOUNDATION

LONG & LONG, P.C.

MCKINNEY FAMILY FUND

MERRILL LYNCH

MOBILE BAR PILOTS, LLC

MOBILE COUNTY REPUBLICAN EXEC. COMMITTEE

MOBILE INFIRMARY

MOBILE SERVICE ELECTRONIC REPAIR

NATIONAL PHILANTHROPIC TRUST

NORMA A WATERS LIVING TRUST

ORANGE BEACH BREEZE

PARADISE BUILDERS

PEOPLES GAS SYSTEM

PLESSALA FAMILY FOUNDATION

PORSCHE CLUB OF AMERICA NORTH FLORIDA REGION

PORT CITY CHIROPRACTIC, LLC

RAYMOND JAMES GLOBAL ACCOUNT

SANTA ROSA DEMOCRATIC EXECUTIVE COMMITTEE

SBA NETWORK SERVICES, LLC

SEASIDE SHOES AND SWIM

ST. JOHN'S EPISCOPAL CHURCH

STORCHEM, INC.

SWEET ENTERPRISES

THE BOUTZALE FAMILY FUND

THE BROWN FAMILY LIVING TRUST

THE EICHHOLD FAMILY FOUNDATION FUND

THE JELKS FAMILY FOUNDATION, INC.

THE MOSES FOUNDATION

THE RICHARD R. & ASHLEY MILLER CROSIER CHARITABLE FOUNDATION

WILLIAM & JANET HAYES CHARITABLE FUND

WIREGRASS UNITED WAY

WORLD IMPACT REAL ESTATE, LLC.

YOURCAUSE, LLC TRUSTEE FOR ABBVIE EMPLOYEE ENGAGEMENT FUND

## Individual Donors

### \$1,000,000+

• MACKENZIE SCOTT

### \$20,000+

• DANIEL DENNIS, III  
• TERRY AND JOANNE MEYER  
• MICHAEL REED  
• RODNEY RICH

### \$19,999-\$10,000

• ROBERT AND MARGARET BYRNES  
• DENNIS AND ANGELA SCHEUERMANN  
• WILLIAM SEEMANN, III  
• ANDREW WEIDERT, JR.

### \$9,999-\$5,000

• LINDA AARNES  
• RON AND MARY BETH ALLISON  
• CONRAD AND GIGI ARMBRECHT  
• BRIAN AND HELEN CUCCIAS  
• DEBBIE AND LANG FLOYD  
• KERRIE FORD  
• JANE GRIEVES  
• JENNIFER HAMILTON  
• GAYE LINDSEY  
• LULA LYNCHARD  
• ANNIE MARIE MAITRA  
• EDINA MANN  
• JOHN AND LINDA MERTING  
• MARY MORGAN  
• JAMIE AND MARION QUINA, JR.  
• KATHARYN RICHT  
• ERIK RYAN  
• ROBERT SANSING  
• JAMES AND ANN SPARKMAN  
• P. BRYAN WALLER

### \$4,999-\$1,000

• WILLIAM ADAMS  
• LINDA AGERTON  
• ZARRINTAJ ALIABADI  
• ALPHONSE ALLEN  
• PAMELA ALLEN  
• JUDY ANDRLE  
• CLARENCE ANGELETTE  
• DOUGLAS ARENT  
• AMY ARMSTRONG  
• REBECCA ARNOLD  
• BRAD ASHLEY  
• ALEXIS ATKINS

• MARGUERITE AVERETT  
• KRISTINA BAIA  
• PATRICIA BAILEY  
• SOPHIA REBEKAH BAILEY  
• SUSAN BAKER  
• THOMAS AND SUZANNE BALL  
• JEFFREY BASSETT  
• THEODORE BATEMAN  
• ALLISON BEARD  
• MARVIN BEASLEY  
• HOPE BECKLUND  
• JON BEGAN  
• VIRGINIA BENDER  
• DEBORAH BENOIT  
• PHILIP BENTON  
• DONNA BEVIER  
• JAMES BINION  
• KATHARINE BISHOP  
• DAVID BJORSON  
• BRIAN AND ELIZABETH BLANCHETTE  
• ELISE BODDIE  
• NORTON BOND  
• JAMES AND JOAN BOONE  
• LAWRENCE BOULDRY  
• GLENN BOUSQUET  
• MURRY AND REID BRADWELL  
• ROBERT AND ELIZABETH BRADY  
• KEITH BRANNAN  
• BARRY AND GAYLE BRECKE  
• MARK BRESLIN  
• DONALD AND HOLLE BRISKMAN  
• MICHELE BROWN  
• DIANE BROYLES  
• THOMAS BRUMFIELD  
• RONALD T. BRUNI  
• JOEL BRUNT  
• JAMES BUGGIE AND MARY MURPHY  
• ROBERT L. BULFIN  
• EDMUND BURKETT  
• KENNETH BURNHAM  
• JANETTE BURNS  
• TIMOTHY AND MARGUERITE BURR  
• HENRY CADDELL  
• KAREN CALAMETTI  
• JERRY CALHOUN  
• CARROLL CAMPBELL  
• ESTELLE CANEROT  
• OLGA CARIPIDIS  
• JOHN CARR  
• JOANNE CARSTENSEN  
• JIM CASTLEBERRY

• LANIER CAULEY  
• ELIAS AND WANDA CHALHUB  
• CHRIS CHASE  
• ALICIA CHASE  
• LEWIS AND ELIZABETH CHENEY  
• FRANCES CHILDRE  
• WILLIAM CLANCY AND JEANNE MEYER  
• STEPHANIE CLARK  
• DANIEL AND JOY CLARK  
• JOEL COHEN  
• ALBERT S. COKER, JR.  
• ROBERT AND ELIZABETH COLEMAN  
• ELIZABETH COLEMAN  
• JESSE COLWELL  
• COLBY COOPER  
• MARY COUSAR  
• YVONNE COX  
• SAM CROSBY  
• GRACE DANIELE  
• ABHIJIN DAS  
• MARK AND JAN DAVIDSON  
• MURRAY DAVIDSON  
• TIMOTHY DAVIS  
• SCOTT AND JULIE DAY  
• DAN DEALY  
• ROBERT DEAN  
• DEBORAH PIERSON  
• JENNIFER DEBOSE  
• TERESA DECASTRO  
• JOSEPH DEFFENBAUGH  
• JAMES DENNY  
• MICHAEL DEWBERRY  
• POPPI DEYTON  
• J.L. AND BETTY DEZAUCHE  
• DINAH DICANDIO  
• GERI DICKINSON  
• GREGG DIXON  
• WILLIAM DOBBINS, JR.  
• THOMAS DOBBS  
• ROBERT DODD  
• DAVID DORING  
• WILLIAM DRIVER  
• PAUL AND JUDY DRIVER  
• HAROLD P. DUCLOUX, JR.  
• BRYAN DUHE  
• MARY DUKES  
• WILLIAM AND LYDIA EARNHART  
• WILLIAM EDWARDS  
• JAMES AND GEORGEANN ELLIS  
• PATRICIA ELMONE  
• GILBERT AND CARLEY EMERSON

# Individual Donors

- TIMOTHY EMMONS
- BONNIE ENGELBRECHT
- CHRISTOPHER FABBRO
- HOLLY FLAGG
- HARRY FLOOD
- MARK AND ANGELIA FOGLE
- GEORGE FORBES
- JOSEPH FOUNTAIN
- SUE FRENCH
- JOACHIM FRIGGER
- JIM FUCHS
- SUSAN FULLER
- HELENE FURR
- LAWRENCE GALLO
- THOMAS AND MARY LOU GANGLE
- HAROLYN GARRISON
- LARRY AND JANICE GEORGE
- VICKI GERSHON
- EDWIN GILBERT
- CLYDE GOLDBACH
- SUSAN GOLDSMITH
- SARAH GOODMAN
- KATHI GORDON
- PENNY AND EDWARD GORECKI, III
- CATHLEEN GOTTHELF
- ROBERT GOURLEY
- RICHARD GREER
- DAVID GRIFFIN
- JOSEPH GROSSI AND NANCY MORRIS
- JOHN GROVE
- BILL AND IRENE GUNTHER
- JAMES AND BARBARA HAAG
- LINDA HAAS
- CARL H. HABER
- KARA HALEY
- BRENDA HAMMACK
- MARK HAMMOND
- NANCY HANEY
- HEINRICH AND NANCY HANRATH
- DONALD HARBISON
- SUSAN HARGER
- CHARLES HARMON
- STEVEN HAUSER
- AMOTH HAYES
- SAM HAZZARD
- WILLIAM HENDERSON
- GEORGE AND JANICE HENDRICKS
- KATHLEEN HENRY
- DANA HERAZO
- MARTY AND ANGELA HERNDON
- JOSEPH HERRON
- BRENDA HETRICK
- STEVEN HIBBS
- JERE AND GAYLE HILBURN
- RAYNALD HOLDER
- WILLIAM AND CARROLL HOLDER
- THOMAS AND NANCY HOLDERER
- LISA HOLLADAY
- MICHAEL HOLLIS
- TOD HOLMAN
- NORMAN HOLMES
- GAIL HONEA
- ZACHARY HOOVER
- JULIET HORNBURG
- STEVEN HOUGH
- DRUHAN HOWELL
- CHARLES HRABE
- JAMES ALLEN HUGHES
- MARGARET HUGHES
- DOUGLAS HUNGERFORD
- JAMES HUNTER
- CAROL INCE
- THOMAS IRVING
- VALERIE JAMES
- DONALD JAMES
- WOODLIFF JENKINS, JR.
- WILLIAM HARVEY JENKINS, JR.
- DJ AND WILLIAM JOHNSON, III
- KEITH JOHNSON
- RICHARD JOHNSON
- PATRICK AND MANDI JONES
- LARRY JORDAN
- LAURIE JURs
- DAVID KAMINKY
- MARTIN KASPER
- COLLEEN KELEHER
- GORDON KIERNAN
- KEITH KILPATRICK
- HARDIE KIMBROUGH
- MARY MARGARET KING
- KEITH AND JULIA KING
- MICHAEL AND WANDA KIRKPATRICK
- LINDA KLOTER
- DONNA KNOPF
- MARY ANN KOECHEL
- GISELA KONE
- ALEX KRAFT
- MAURUS KRESSE
- GREGORY AND BARBARA KROHN
- GRETCHEN KROMER
- WAYNE P. KRUMEL
- BILL AND ROSE KUHHIRTE
- LISA LADD
- EDWARD LADD
- JON LAIBLE
- BARRY LANGLEY
- DAN AND CONNIE LANKHEIT
- ROBERT LAUSCH
- JENNIE LEGGE
- THOMAS LEHRER
- ALLEN LEWIS
- MARK AND PATRICIA LINDER
- JOHN AND SHARON LINDSAY
- CURTIS LOCKLIN
- GRACE LOVETT
- SUSAN LUCE
- JANET LUDWIG
- MONIKA LUTZ
- LAUREEN LYNN
- SEAN MACKEN
- THOMAS MACKINNON
- CORNELIA ANN MAGEE
- ROBERT MALDONADO
- BERNARD MALKOVE
- JOHN J. AND AVIVA MALLARY
- E. RUSSELL MARCH, JR.
- DAVID MARTIN
- GEORGE MARTINDALE
- MICHELE MARX
- JENNIFER MASSETT
- HAYLEY MAULSBY
- MARIA MAVAR
- GAYLE MAYO
- JAMES AND HAZLE MAYO
- BETTY MCCORMICK
- PAULA MCGEADY
- JUDY MCKEE
- MARK MCNEIL
- SHARON MCQUAY
- ROBERT AND PAT MEAHER
- BETH MELTON
- SUSAN MILLER
- NATHAN MILLER
- DAVID AND MARILYNN MILLER
- GREGORY MILLIKAN
- AMY MITCHELL
- ROBERT MITCHELL
- LAWRENCE MOBLEY
- EDWARD MOORE
- ROBERT L. NAIL
- SUZANNA NEAL
- LAUREN E. NELSON
- GEORGE G. NELSON, JR.
- JOENE NEWELL
- CHARLOTTE NICHOLAS
- KATHY NICHOLSON
- LINDA NIX
- JOHN NODAR
- DIANNE NOLAN
- DAVID NORRIS
- CHARLES AND CYNTHIA NORWOOD
- DANIEL O'BRIEN
- DANIEL O'CONNELL
- VONDIE O'CONNER, JR.
- SUZANNE ODOM-SELBE
- MARGARET OLDER
- EMMETT OMAR
- SANDRA ORANGE
- JERRY PAGE
- PHYLLIS PAINE
- RAYMOND AND CAROLYN PALMER
- KEITH PALMER
- RENE PALMER
- PATRICIA PANAYIOTOU
- MELINDA PARKER
- GAIL PATRICK
- CAROL PAYNE
- DONNA PAYNE
- DIANE PEARSON
- E. B. PEEBLES, III
- EVA PELHAM
- ELIZABETH PETERSON
- DALE PFEIFFER
- GARY AND PATRICIA PHILLIPS
- WENDELL AND LOUISE PHILLIPS
- MICHAEL POFF
- JIM POPE
- PAUL PRICE
- TIM PUCKETT
- ANNIE PUCKETT
- VINCENT AND MARY QUINTA
- BONNIE RAITT
- DANNY AND TINA RATLEDGE
- CHARLES RAUP
- JOHN REICHES
- NICOLE REID
- HARRISON RICHARDSWISE
- JEFFREY RICKETTS
- JANET RIDGEWAY
- JERRY RILEY
- EDWARD AND LORI ANN RIVERA
- LINDA ROBERTS
- JERRY ROBINSON
- RICKY AND JACQUELINE RODRIGUEZ
- SANDRA ROLEY
- C. REED ROLLINS
- GEORGE AND MARIE ROSE
- JONATHAN RUDOLPH
- DALE AND PENNY RUNYON
- LAURA RUTHERFORD
- H.D. RYAN
- DAVID RYDEN
- JOSEPH SALMON
- JANET SALMON
- NORMAN AND TAMMY SAMUEL
- SUSAN SANTOLI
- BILL SCHAEFER
- RELIA MAE SCHEIB
- HAL AND VICKI SCHINDLER
- GEORGE SCHROETER
- JAMES AND GIULIANA SCOTT
- JANICE SCROGGINS
- SIGRID SECAN
- FRANK AND EDNA SELTZER
- CHELSEY SEXTON
- HAROLD SHAVER
- THOMAS AND LINDA SHERRY
- NEIL SIDEBOTHAM
- TERRY AND DEBORAH SIMISON
- CARL SIMMONS
- JOHN AND HELEN SINK
- SUSAN SKLENAR
- MARY HUNTER SLATON
- DANIEL SLOAN
- LARRY SLOAN
- TERESA SMITH
- ROBIN SMITH
- GEOFFREY SMITH
- BEVERLY SMITH
- BENNY AND LYNDA SNOW
- SANDY SNOW
- TROY SNOW
- DAVID AND ELIZABETH SNYDER
- DAVID SODERGREN
- MICHAEL SPECTOR
- KYRA SPEEGLE
- ROBERT AND ELISE SPLIT
- EMMA STANFORD
- CATHY STEPHENSON
- GENE AND KAREN STOLTZ
- ALEXANDRA STRAUB
- JOEY STRICKLAND
- MICHAEL STRICKLAND
- SUSAN SUTHERLAND
- ROBERTA SWANN
- PHILIP TATAR
- SCOTT TATUM
- WILLIAM TAYLOR
- THOMAS TAYLOR
- ANTHONY AND LINDA TERHAAR
- SANDRA THOMAS
- JENNIFER THOMAS
- MICHAEL AND MARILYN THOMASON
- BARRY THOMPSON
- SUSAN THORNTON
- HEATHER TOLER
- MARY TRAVIS
- RON AND JOYCE TRUE
- DAVID TURLEY
- JAMES AND CATHERINE TYREE
- KATHLEEN UHLER
- PHILIP VARGHESE
- ANTHONY AND SUSAN ASILAKIS
- JULEE AND TONY WALDROP
- WILL WALKER
- GEORGE AND CINDY WALKER
- MARSENE WALSH
- HOLLIS AND DELLA WARD
- JIMMIE WARD
- WILLIAM WARREN
- ANNE WARREN
- BARBARETTE WARREN
- HARLAN WEBRE
- STEVEN WEHNER
- MARGARET N. WEITZMANN
- GREG WELCH
- MARY SHAFFER WELLS
- SANDY WHITAKER
- THOMAS WHITESIDE
- PALMER WHITING
- PAUL WHITMIRE
- BRENDA FAVRE WILKINSON
- BEATRICE WILLIAMS
- HUBERT WILLIAMS
- NELDA M. WILLIAMS
- SUSAN WILLIAMS
- GLORIA WILLIAMS
- JOHN WILLS
- NANCY WILSON
- ELIZABETH WOOLF
- WALTER WULFF
- TONI WURTH
- ANNIKA YANDELL
- ANN YOSHIHASHI
- DAVID YOUNGBLOOD
- BARBARA ZANDER
- BARNEY ZEITVOGEL

**\$999-\$500**

- TRACY ADDERHOLDT
- ALFRED AGEE, III
- FLORINE ALBERTSON
- KIMBERLY ALBINS
- WENDY ALLEN
- ANN ANDERSON
- KRISHNA ANNAMBHOTLA
- CARLTON AND ERNESTINE ARDIS
- ARSLAN ARSHAD
- AGATHA ASURU
- HOWARD AUSTIN
- LISA AYLSTOCK
- RICHARD AND KATHLEEN BAKER
- BRUCE BAKER



# Individual Donors

<ul style="list-style-type: none"> <li>ELISA BALDWIN</li> <li>MATTHEW BARBOUR</li> <li>LISA BARKER</li> <li>JAMES BARNELL</li> <li>DOUG BARNES</li> <li>HARRY AND VIRGINIA BARR</li> <li>WILLIAM BARRETT</li> <li>FREDERICK BARTHELME</li> <li>CARRIE BARTON</li> <li>RONALD BAUGHMAN</li> <li>MARJORIE BAXTER</li> <li>ANGELINA BEASLEY</li> <li>BARBARA BEAVERS</li> <li>THOMAS BECK</li> <li>SUSAN BEHRENS</li> <li>KATHERINE BEKURS</li> <li>CHRISTINE BELAU</li> <li>SUSAN BELL</li> <li>LEE BELL</li> <li>JAY BELL</li> <li>RONALD BELTER</li> <li>MARVIN BENNETT</li> <li>PAUL BENTON</li> <li>PATRICIA BERGER</li> <li>FREDERICK BERNARDIN, JR.</li> <li>MARSHA BEST</li> <li>LARRY BLAKE</li> <li>DONALD AND BONNIE BLOCKER</li> <li>JOSEPH BOCCHINO</li> <li>B. FRED BODIE</li> <li>KIMBERLY BOHN</li> <li>JOHN BONI</li> <li>ANNE BONNYMAN</li> <li>TRACY BOSWELL</li> <li>SHIRON BOUTWELL</li> <li>CHARLES BOYKIN</li> <li>CAROLYN BRADEN</li> <li>ANN BRADFORD</li> <li>STANLEY BRAGG</li> <li>JOANNE BRANDT</li> <li>DARRELL BRAUTIGAM</li> <li>STEPHEN BRIDGES</li> <li>LILLIAN BRINING</li> <li>RUTH BROMER</li> <li>FRANKLIN BROWN</li> <li>CHARLES AND KATHLEEN BROWN</li> <li>DALE BROWN</li> <li>MARILYN BROWN</li> <li>GRETCHEN BRUBAKER</li> <li>JILLIAN BRUNSON</li> <li>JANIS BRYANT</li> <li>ANTHONY BUCHER</li> <li>MICHAEL BURBA AND JEAN SIEBENALER</li> </ul>	<ul style="list-style-type: none"> <li>PATSY BURGESS</li> <li>PAUL BURKHOLDER, III</li> <li>ANNA BURNESKE</li> <li>ANGELA BURNS-FREELAND</li> <li>BEVERLY BURNSED</li> <li>LEON BURRIGHT</li> <li>DUDLEY BURWELL</li> <li>CAROLINE BUSBEE</li> <li>DEBBIE CALDER</li> <li>JAMES CALDWELL</li> <li>JACKIE CALLAHAN</li> <li>DONNA CAMP</li> <li>IRIS CAMPBELL</li> <li>TRACY CAMPBELL</li> <li>GARY CARNAHAN</li> <li>CLARENCE CARRIO</li> <li>CARL CARSTENSEN</li> <li>LUKE CATES</li> <li>WAYNE CHALMERS</li> <li>MARGARET CHAMBLESS</li> <li>SHANNON CHANG</li> <li>DANIEL CHARLES</li> <li>DORIS CHAVIS</li> <li>WILLIAM CHESTNUT</li> <li>ROBERT CHRISTIANSEN</li> <li>RAYMOND CLARK</li> <li>SUSAN CLINTON</li> <li>WILLIAM CLIPPINGER</li> <li>JOHN AND CYNTHIA COCKERHAM</li> <li>LINDSEY COCKRELL</li> <li>SHIRLEY COLEMAN</li> <li>RYAN COLLIER</li> <li>BETTYE COLLINS</li> <li>LAURA COLLINS</li> <li>JASON AND COLLEEN COMER</li> <li>CLARENCE COOKE, JR.</li> <li>CHERYL COOPER</li> <li>MARY CORBOY</li> <li>GEORGE CORNETT</li> <li>KRISTINE COTHREN</li> <li>JOEL AND BETTY COUCH</li> <li>JOHN COURTNEY</li> <li>ALTON AND MARY CRABB</li> <li>SHARON CRABTREE</li> <li>JOHN AND KAREN CREAMER</li> <li>ROY AND GAY CULPEPPER</li> <li>TAMMY CURL</li> <li>ANN CURRY</li> <li>MIKE CURTIN</li> <li>ISAAC DALE</li> <li>DEBRA DANA</li> <li>PEGGY DANNEKER</li> <li>JOEL DAVES, IV</li> <li>CHARLES AND NANCY DAVIDSON</li> </ul>	<ul style="list-style-type: none"> <li>PAULA DAVIS</li> <li>ALVIN DAY</li> <li>DAVID DE GAFFERELLY</li> <li>WILLIAM DEMPSEY</li> <li>HAYDEN DENT</li> <li>STEVE DESROSIER</li> <li>JOHN DEWITT</li> <li>LILA DEXTER</li> <li>STEPHEN DILL</li> <li>JUDITH DILONARDO</li> <li>ZACHARY DOLL</li> <li>RICHARD DOLLISON</li> <li>KAREN DORGAN</li> <li>KELLY DORGAN</li> <li>H. C. DORING</li> <li>ALLISON DOUGLAS</li> <li>THOMAS AND NANCY DOYLE</li> <li>JIMMY DREW</li> <li>PERRIN DREW</li> <li>KENNETH DRIVER</li> <li>JEANIE DUMESTRE</li> <li>DEANNA DUNAGAN</li> <li>RON DUNN</li> <li>JOHN DUNPHY</li> <li>CAROLYN DURANT</li> <li>JOYCE DYAS</li> <li>PEGGY EALUM</li> <li>RONALD ECKMAN</li> <li>KATHLYN EDDS</li> <li>LEONARD AND SHAUN EDWARDS</li> <li>PATRICIA EICHLER</li> <li>AHMED EL-AFANDI</li> <li>NIGEL ELLIOTT</li> <li>ALICE ELLIOTT</li> <li>IRENE ELLIS</li> <li>ADELINA EMMI</li> <li>GENE ENG</li> <li>THOMAS ENGLISH</li> <li>CYNTHIA ESCULANO</li> <li>MADelyn ESKRIDGE</li> <li>MARGARET ESPY</li> <li>JIM EUBANKS</li> <li>ELLA EVERETT</li> <li>ROBERT EVERS</li> <li>GEORGE AND BELINDA EYRICH</li> <li>JOEL FAIRBANKS</li> <li>MONIQUE FARRIER</li> <li>MICHAEL FARRIER</li> <li>JEAN FEUERSTEIN</li> <li>MELINDA FINAN</li> <li>KEITH FLETCHER</li> <li>RONALD FLINKERBUSCH</li> <li>JULIA FLYNN</li> <li>WILLIAM FOSTER</li> </ul>	<ul style="list-style-type: none"> <li>RON FOSTER</li> <li>KELLY FOUNTAIN</li> <li>RONALD FRANKS</li> <li>GEORGE FRENCH</li> <li>DIXIE FRENCH</li> <li>EDWARD FRIEND</li> <li>BARBARA FRIERSON</li> <li>DEBRA FRYE</li> <li>SIDNEY FULFORD</li> <li>KENNETH FURR</li> <li>RODNEY AND LINDA GAINES</li> <li>MARY GALE WOOLFORD</li> <li>CAROL GANTT</li> <li>MARK GARTMAN</li> <li>IAN GASTON</li> <li>ELAINE GEORGAS</li> <li>DONNA GERHART</li> <li>MICHAEL GIARDINA</li> <li>JAMES GIBSON</li> <li>MARY GIBSON</li> <li>LINDA GILBERT</li> <li>GERALD GILLEN</li> <li>FAYE GLEESON</li> <li>LORA GLINES</li> <li>TANI GODFREY</li> <li>JEANNE GODWIN</li> <li>PATRICIA GOFF</li> <li>JAN GOFF</li> <li>DEAN GOLDSWORTHY</li> <li>DARRELL GOODEN</li> <li>MICHAEL GOODIN</li> <li>CATHLEEN GORDON</li> <li>DENNIS GOULD</li> <li>ROBERT AND KATHLEEN GOWLAND</li> <li>CONOR GRACE</li> <li>CHARLES GRAHAM</li> <li>JAMES AND BLANCA GREEN</li> <li>STEVEN GREGORY</li> <li>WALTER GRONZIK</li> <li>JOHN GUGLIK</li> <li>RICHARD GUIDELLI</li> <li>CAROL GUY</li> <li>SUZANNE GUY</li> <li>LINDA HAAGEN</li> <li>DEBRA HAASE</li> <li>JUDITH HAFNER</li> <li>JOHN AND VERA JO HAGAN</li> <li>VAL HALSEY</li> <li>DEANE HALVORSEN</li> <li>JILL HAMZE</li> <li>ROBERT AND AUDREY HANKS</li> <li>ELLWOOD HANNUM</li> <li>ADELE HAPWORTH</li> <li>CANDIS HARBISON</li> <li>JEFFERSON HARMAN</li> <li>MICHAEL HARRIS</li> </ul>	<ul style="list-style-type: none"> <li>GEOFFREY HARTER</li> <li>DONALD HAY</li> <li>JEAN HAYDEN</li> <li>GEORGE HAYNER</li> <li>KENNETH HAYNIE</li> <li>MIKE HEATH</li> <li>LUCY HEEGAARD</li> <li>ANNE HEITMAN</li> <li>JOHN &amp; CATHY HELEAN</li> <li>NANCY HELMICK</li> <li>TIMOTHY AND JANE HEMENWAY</li> <li>MARY HENDERSON</li> <li>RICIA HENDRICK</li> <li>LARISSA HERDA</li> <li>PAULA HERNANDEZ</li> <li>PAMELA HERNDON</li> <li>LISA HESMONDHALGH</li> <li>MATTHEW HIATT</li> <li>MARY HICKS</li> <li>ANDREW AND NANCY HIGGS</li> <li>STEPHEN HILLIARD</li> <li>WILLIAM AND CONNIE HILLIS</li> <li>PHILIP HODGSON</li> <li>AUDREY HOFFMAN</li> <li>JAMES HOLLAND</li> <li>PATRICIA HOLLOWAY</li> <li>CHARLES AND JEAN HOLMAN</li> <li>NANCY AND GORDON HOUSE</li> <li>CHARLES HUDSON</li> <li>TERESA HUGHES</li> <li>GREGORY AND DEBRA HUTTO</li> <li>JOHN IMPERANTE</li> <li>JANE ISHEE</li> <li>DELONA JACKSON</li> <li>EDWARD JACOBS</li> <li>MARGARET JOFFRION</li> <li>GEORGE MICHAEL JOHNSON</li> <li>DEBORAH JOHNSON</li> <li>BRIAN JOHNSON</li> <li>CARL AND SHARON JOHNSON</li> <li>BARRY JONES</li> <li>RONALD JONES</li> <li>ANTIONETTE JONES</li> <li>GERALD JONES</li> <li>RALPH JONES</li> <li>CHRISTOPHER AND JULES KARIHER</li> <li>THERESA KAUFFMAN</li> <li>ROBERT KEHNE</li> <li>DAVID KEITH</li> <li>LILLIAN KEMPER</li> <li>CLYNIECE KENNEDY</li> <li>CYNTHIA KENNEDY</li> <li>ROBERT KERN</li> </ul>	<ul style="list-style-type: none"> <li>PETER AND SANDRA KERR</li> <li>STEVEN AND REBECCA KEY</li> <li>RODNEY KILGORE</li> <li>ANN MARIE KILPATRICK</li> <li>LESLIE KING</li> <li>KATHY KINGRY</li> <li>SPENSER KISBY</li> <li>BERNARD KISNER</li> <li>JEFF AND ALEXANDRA KLEIN</li> <li>JOHN KLOTZ</li> <li>RICHARD KNIGHT</li> <li>HAROLD KNOTTS</li> <li>SHIRLEY KNOWLES</li> <li>DUANE KRAUSE</li> <li>DELORIS KRONEBUSCH</li> <li>KENNETH KUNTZ</li> <li>NANCY KURRE</li> <li>MARK AND KAREN KURTZ</li> <li>EDWARD LADD</li> <li>ERNEST LADD, IV</li> <li>ALEX AND GLORIA LANDI</li> <li>HAROLD LANDIS</li> <li>KATE LAVELLE</li> <li>GEORGE LAVENTURE</li> <li>CLAUDIA LAWSON</li> <li>MARION LEACH</li> <li>SUSAN AND JOHN LEACH, JR.</li> <li>MARY LECROY</li> <li>TONY LEE</li> <li>DONALD LEETH, JR.</li> <li>MARIE LEHMANN</li> <li>BARBARA LENAGHAN</li> <li>JOHN LEWIS</li> <li>DIANNE LEWIS</li> <li>MICHELLE LIECHTI</li> <li>CHARLES LILLY</li> <li>PATSY LINDSAY</li> <li>JANET LLOYD</li> <li>KATIE LOCKER</li> <li>RICKEY AND ELIZABETH LONG</li> <li>ROY LOSEY, JR.</li> <li>KINA LOUDERMILK</li> <li>MIKE LUESCHER</li> <li>PATRICK LYNCH</li> <li>DIANA ALLEN</li> <li>LINDA MACHEK</li> <li>KIM MACQUEEN</li> <li>RODERIC MAGIE</li> <li>KEVIN MAHAFFEY</li> <li>LINDA AND RODNEY MANASCO</li> <li>OWEN MANCARELLA</li> <li>STEPHEN MARCOUX</li> <li>SYBIL MARIONNEAUX</li> <li>ROBIN SWIFT MARKS</li> <li>SHARON MARSH</li> <li>CHARITY MASON</li> <li>JAMES MASON</li> </ul>
--	---	--	---	--	--

## Individual Donors

- JANE M. MASSEY
- GRETA MASSING
- LEON AND JEAN MATTICS
- VENANCIO MAYSONET
- FLORA MCCARN
- JERRY ANN MCCARRON
- PAUL GRAHAM MCCLINTOCK
- DIANE MCCORQUODALE
- YVONNE MCCORVEY
- SARA MCCOY
- OLIVER MCDONALD
- PRISCILLA MCDONOUGH
- LAURA MCGHEE
- MARSHA MCGUIGAN
- SHERRY MCKNIGHT
- JOANN S. MCLENDON
- TIMOTHY MCMAHON
- MARY BETH MCMANUS
- SAM MCMURRAY
- JOE MCNEEL
- STEVEN MCNEELY
- THOMAS MCPHERSON
- MILTON MCPHERSON, JR.
- JOHN MICKLER
- RICHARD MILLETTE
- WILLIAM MILLS
- MICHAEL MINARD
- FRANK E. MISITA
- RICHARD MITCHELL
- DEBORAH MONROE
- JOHN MONROE
- MELANIE MOORE
- PAUL MOORE, SR.
- DONALD MOORE
- JOHN MORGAN
- PATRICK MORIN
- LISA MORRIS
- JOHN MORRISON
- KATRINA MORRISON
- MARJA LYNNE MUELLER
- REBEKAH MURRAY
- RITA MURRAY
- MAX MYERS
- RUSSELL NEHRIG
- WALTER NELSON
- GEORGE NEWCOMER, JR.
- ERIC NEWQUIST
- MELANIE NICHOLS
- ANTHONY NICHOLS
- RAYMOND NOELLERT
- TED NORTHROP
- CLARENCE AND PRISCILLA O'REAR
- STEVE OBERLE
- PAMELA ODEN
- RONALD ORI
- BURNEDETTE ORSO
- MICHELLE ORWIG
- CAROL OTTS
- GARY OWENS
- ALBERT JAMES PAIRE
- TRIP AND BECKY PALMER
- ANTHONY PALMER
- VASILEIOS PAPATHANAKOS
- DIAN PARSELY
- DAE PATEL
- BRYANT PATEL
- LANDIS PATRICK
- NANCY PATTERSON
- MELONIE PAYNE
- MICHAEL PEARSON
- LEAH PEAVEY
- KIRK PENNAK
- ROBERT PERKINS
- MARY ELIZABETH AND WADE PERRY, JR.
- CATHERINE PERRY
- BOB PETERSON
- MELODY PETTY
- THORSTEN PFEFFER
- DEBORAH PHILLIPS
- STEPHANIE PLUSCHT
- C.R. POPPENDIECK
- KAREN PORTER
- JOHN POSTEL
- RANDALL AND NOLA POWELL, SR.
- SUSAN POWRIE
- JUDITH PRITCHARD
- PATRICIA PRIVETTE
- MARTHA PROTHRO
- MICHAEL PRUETT
- CAROLYN PULLEN
- THOMAS PULLEN
- FAUZIA QUDDUS
- JEANNE RACQUIER
- LESLEY RAINOSEK
- GERALD REEVES
- ERNEST REINKE
- CHRISTOPHER RENFROE
- PETER RENTSCHLER
- ANTHONY RICCIARDONE
- MARC RICE
- MICHELLE RICHARDSON
- ALICE RIEBEN
- JESSE W. RIGBY
- JUANITA RILEY
- CAROL ROBBINS
- JOYCE ROBERSON
- AMBER ROBERTS
- RHONDA ROBERTS
- SHARON ROBERTS
- RHONDA ROBINS
- JOHN ROGERS
- DONNA ROGERS
- DIANNE AND TONY ROGERS
- HELEN ROSAIA
- BRENDA ROSE
- LOUIS AND JOAN ROUILLIER
- JOAN RUTH
- FRED AND LINDA RUX
- NANCY SAMPLE
- LAURA SANNA
- ANGELA AND ROBERT SAXON
- ALANA SCHEIB
- STEPHEN SCHNEIDER
- CAROLYN SCHUPP
- EVA SCHWIND
- EUGENE SEIDEL
- KIRK C. SHAW
- GARY SHAW
- DAWN SHEA
- KATHLEEN SHEARER
- RONALD SHELTON
- RAE SHETTER
- WILLIAM SHIELDS
- MIKE SHIRLEY
- ROBERT SHOWALTER
- VISHAL SHROFF
- ELLEN AND WILLIAM SHULMAN
- FRED SIGNS
- MARY SITTMAN
- MARK SKALIJ
- MICHAEL SKINNER
- WILL SLEDGE
- MATTHEW SMEDLEY
- JAMES SMITH
- ALEXANDRA SMITH
- DANNY SMITH
- SCOTT SMITH
- JANE AND DONALD SMITH, JR.
- KAREN SMITH
- ROBERT AND CHRISTINE SMITH
- DIANE SOCKWELL
- WILLIAM AND CECILE SPARKS
- KIRK SPEARMAN
- ANN STAFFORD
- MARSHA STANTON
- LANITA STEINER
- RIC AND CINDY STEWART
- RONNELLE STEWART
- THOMAS STEWART
- MICHAEL AND REBECCA STODARD
- JUDY STOUT
- JAMES AND BARBARA STRICKLAND
- KATHRYN STUBLESKI
- FRED SUDEIHA
- PATRICK AND MAHALA SULLIVAN
- ALI SUREK
- JAMES SWARTZ
- MICHAEL TAYLOR
- SARAH TAYLOR
- LEIGH AND CHARLOTTE TAYLOR
- THEODORE TAYLOR
- GAIL TERRELL
- WILLIAM THOMAS
- JACKIE THOMAS
- CAROLE THOMPSON
- KATHERINE THOMSON
- PATRICIA THURBER
- RICHARD AND LYNN TITMAS
- CAROL TOMCHAY
- BARBARA TRAMMELL
- MARIAN TRIGG
- JOANN TUCKER
- BRUCE AND CAROL TWIGG
- JOHN TWILLEY
- WILLIAM URQUHART
- HEATHER URRUTIA
- TONY VAN AKEN
- ELIZABETH VAULIN
- GLENN AND KAY VINCENT
- CAMERON VOWELL
- JO ANN WALDO
- SHAWN WALES
- PATSY WALET
- JOHN WALKS
- MARY ANN WALSH
- KIMBERLY WARD
- BETTY WARD
- MICHAEL WARDLAW
- JOHN WARNER
- GREGORY WASELKOV
- EMILY WASHBURN
- BILL WATFORD
- BETTY WATKINS
- MICHAEL WEAK
- CHRISTINE WEATHERS
- JUDY AND MARK WEAVER
- JANET WEEKS
- ROBERT WEESNER
- PAMELA WEISS
- JAMES WELTER
- BONNIE AND DARRELL WERTANEN
- CHARLIE WESTRY, JR.
- WILLIAM WHIBBS
- BARBARA WHITAKER
- DAVID AND KATHLEEN WHITE
- ANN AND PATSY WHITE-SPUNNER
- SANDRA WHITESIDE
- EMMA WHITFIELD
- MICHAEL WHITNER
- LUCI WHITWORTH
- PAMELA WICKHAM
- MICHAEL AND MARGARET WILCOX
- LYNN WILKINS
- MARJORIE WILLIAMS
- MARY WILLIAMS
- LANDON DAVID WILLIAMS
- SARAH WILLIAMS
- BOBBY WILLIAMS
- KEITH AND TASHA WILLIAMS
- JAUNITA WILLIAMS
- GAYLE WILLIAMS
- LINDA WILLIAMSON
- CHARLES WILLIS
- V. DAWN WILSON
- DONALD WILSON
- ALI WINKLE
- JONATHAN WINTERS
- KATE WOLVERTON
- BOB WOOD
- HENRY WOOLLARD
- POLLY AND WILLIAM WORKMAN
- LEE AND CAROLE WRIGHT
- VICKIE WYATT
- NICOLE ROBERTSON
- JIM YOUNG
- PAULA ZAK
- MICHAEL ZAK
- JOSEPH ZICKAFOOSE
- BARBARA ZOLL

## Community Support

# Thank You!

In 2020 our communities faced challenges and uncertainty unlike any in recent history. The resilience of families and individuals across our communities was tested as we were stretched to our limits. But through it all we were brought together. It is the dedication and willingness of partners to help that allowed us to support our neighbors during a year like no other.

Because of your ongoing partnership and selfless generosity, Feeding the Gulf Coast is making meaningful progress in the fight to end hunger along the central Gulf Coast, while also rising to meet the surge in demand. Humbled and inspired by your tremendous support, we will continue to make a difference together—**one meal at a time.**

### Lifetime Giving Donor Legend:

• Reaping the Harvest	\$25,000+
• Gleaning Goodness	\$10,000-\$24,999
• Fruits of Caring	\$5,000-\$9,999
• Grains of Kindness	\$2,500-\$4,999
• Seeds of Giving	\$1,000-\$2,499





# Our Vision

A HUNGER-FREE  
CENTRAL GULF COAST

## Our Mission

Feeding the Gulf Coast works through member organizations and special programs to provide nutritious food to meet the challenge of feeding people who are hungry as a result of systemic poverty, personal crisis or disaster.

We also educate the public regarding domestic hunger, proper nutrition and other related issues.

## 2020 Board of Directors

**Brad Hicks**, Chair  
*Stone Crosby, P.C.*

**Doug Whitmore**, Vice Chair  
*Wells Fargo Advisors*

**Michael Holland**, Treasurer  
*Bryant Bank*

**Derrick Williams**, Secretary  
*Williams & Associates*

**Marion Quina Jr.**, Past Chair  
*retired*

**Bruce Baker**  
*RE/MAX Infinity*

**Chad Brown**  
*Thompson Engineering*

**Jorge Cancel**  
*Titan Homes*

**Debbie Floyd**  
*retired*

**Rachel Holland**  
*United Bank*

**Michael Hollis**  
*Southeast Toyota Finance*

**Rufus Hudson**  
*Regions Bank*

**Valerie James**  
*VisionSpot Consulting Group, LLC*

**Joe Mareno**  
*Retired*

**Willson McClelland**  
*The First*

**John Merting**  
*Law Offices of John W. Merting, P.A.*

**Alec Naman**  
*Naman's Catering*

**Tom Ninestine**  
*Naman's Catering*

**Ben Russell**  
*Coastal Slip Form, LLC*

**Lee Teumer**  
*Hy-Grade Valve Inc.*

**Katie Widdows**  
*Hancock Whitney*

*Feeding the Gulf Coast, formerly Bay Area Food Bank, is a member food bank of Feeding America and a United Way member agency. This institution is an equal opportunity provider. To read the entire USDA statement, visit our website at [feedingthegulfcoast.org](http://feedingthegulfcoast.org).*

Photos used are for illustrative purposes and do not match the client testimony.

